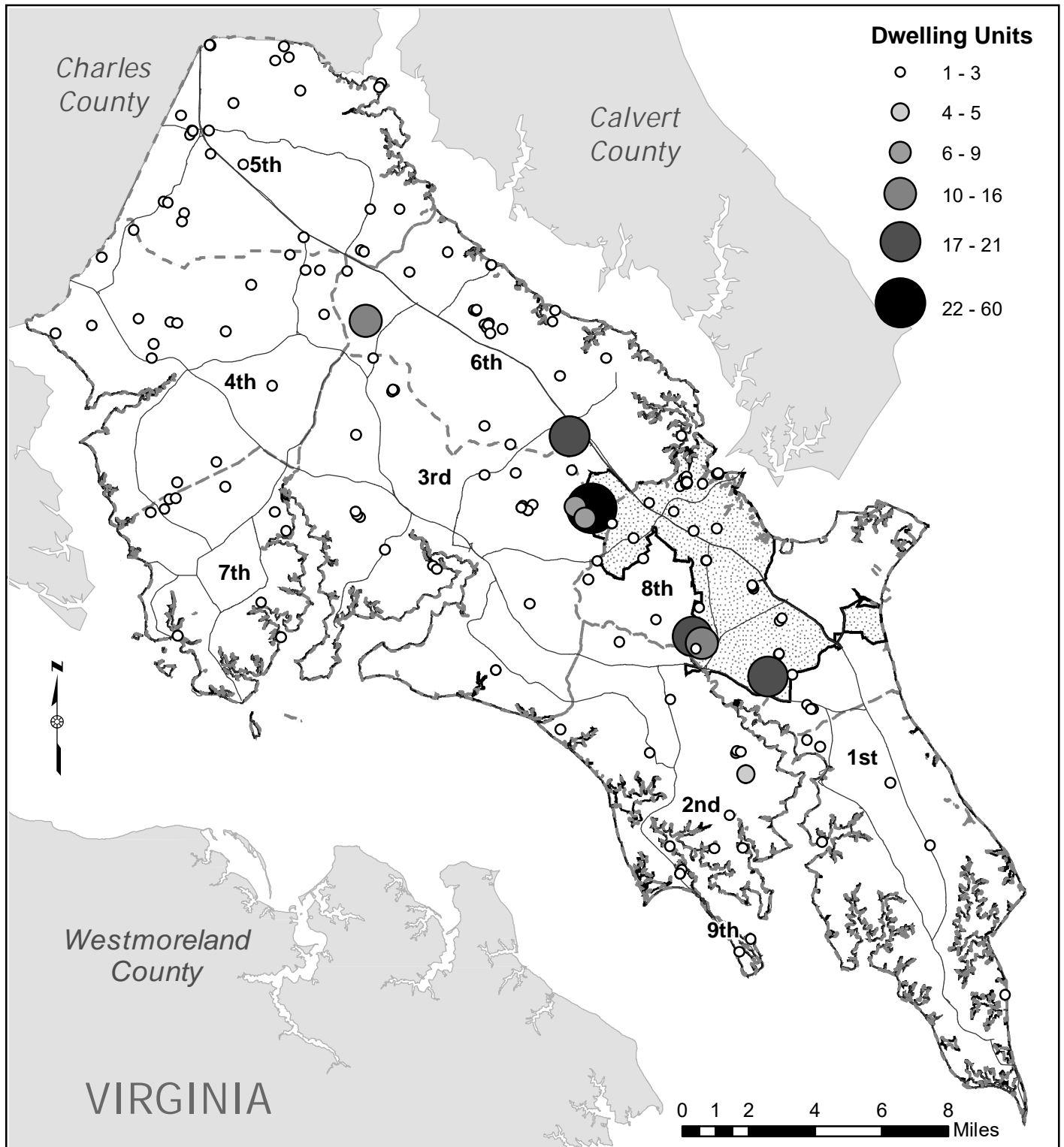


# Building Permits Issued for New Dwellings January 2019 - December 2019



During 2019 there were 370 building permits issued for new dwelling units by St. Mary's County, Maryland.

- ELECTION DISTRICT
- ▨ LEXINGTON PARK DEVELOPMENT DISTRICT





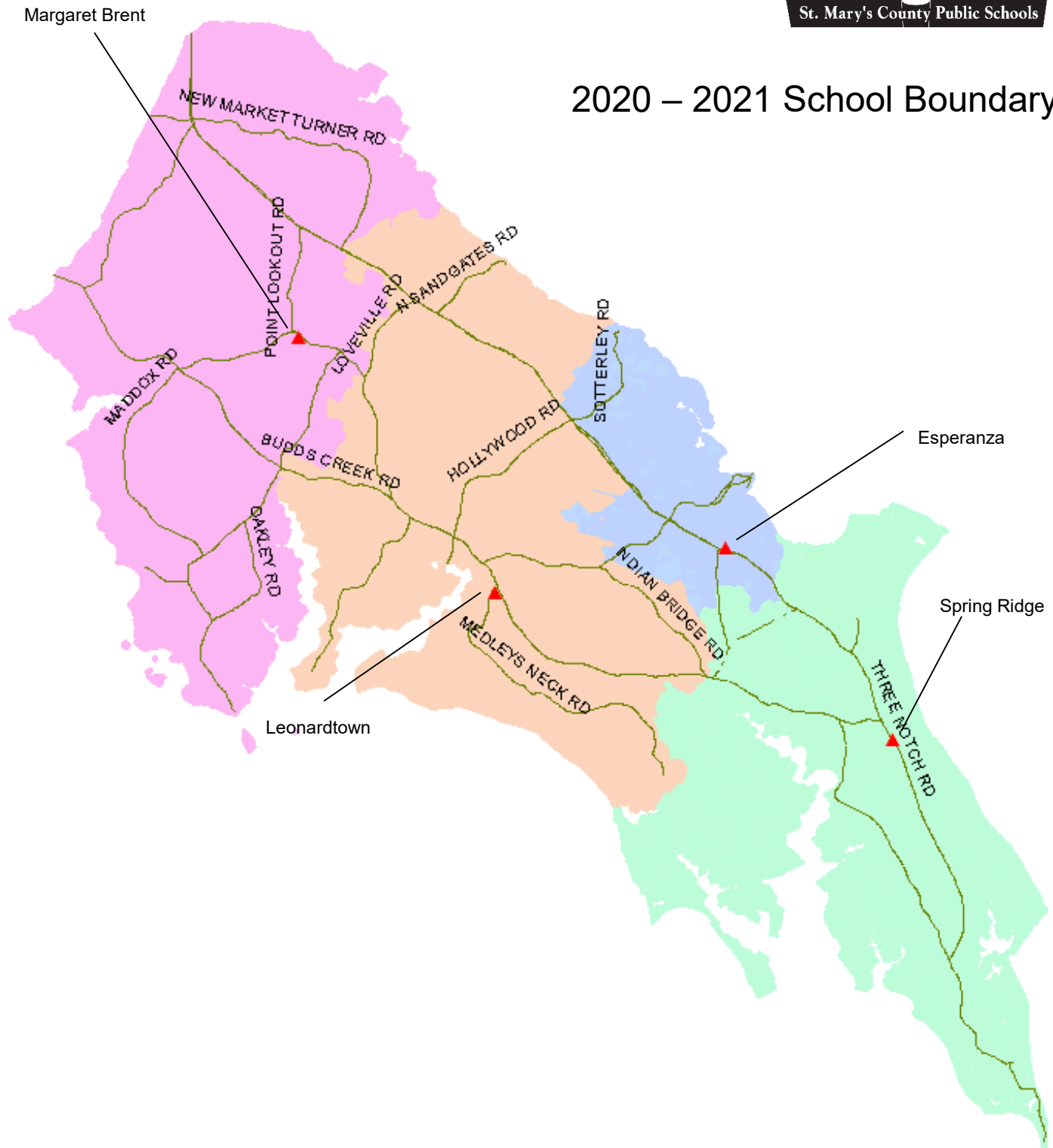




# Middle School Boundary Map



## 2020 – 2021 School Boundary



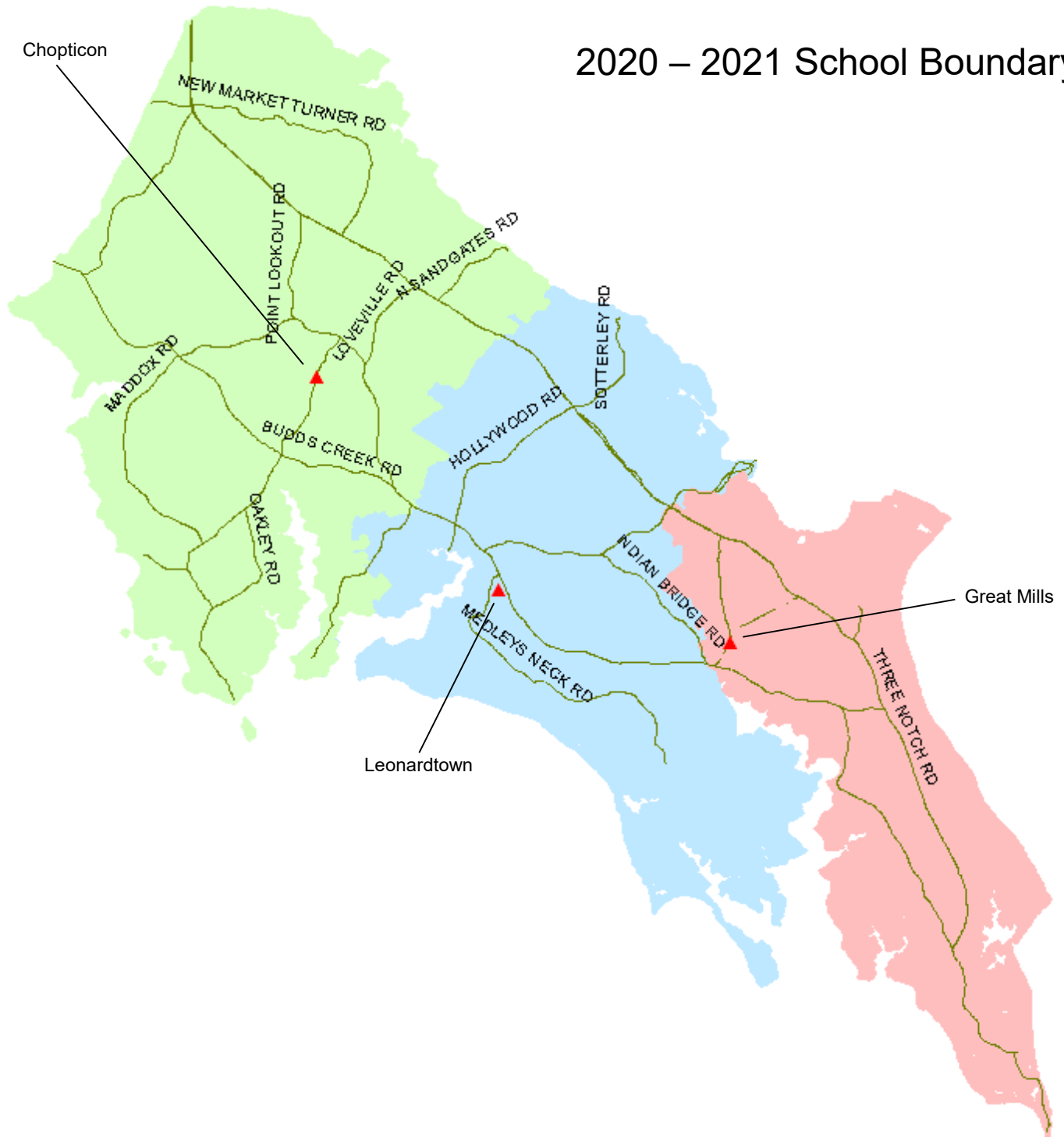
St. Mary's County Public Schools  
Department of Capital Planning  
27190 Point Lookout Road  
Loveville, MD 20656  
(301) 475-4256, ext. 6

The information provided is only a guide to SMCPs school district boundaries and facilities. SMCPs has made substantial efforts to ensure the accuracy of the information. However, school boundary and facility information are subject to change. School boundaries may be unreliable for residents in new subdivisions or residents near a school district boundary. The user of this information understands the statements above and is taking full liability for any use of the data. For verification of any school boundary, please call the Department of Capital Planning at 301-475-4256, extension 6.

# High School Boundary Map



## 2020 – 2021 School Boundary



St. Mary's County Public Schools  
Department of Capital Planning  
27190 Point Lookout Road  
Loveville, MD 20656  
(301) 475-4256, ext. 6

The information provided is only a guide to SMCPs school district boundaries and facilities. SMCPs has made substantial efforts to ensure the accuracy of the information. However, school boundary and facility information are subject to change. School boundaries may be unreliable for residents in new subdivisions or residents near a school district boundary. The user of this information understands the statements above and is taking full liability for any use of the data. For verification of any school boundary, please call the Department of Capital Planning at 301-475-4256, extension 6.