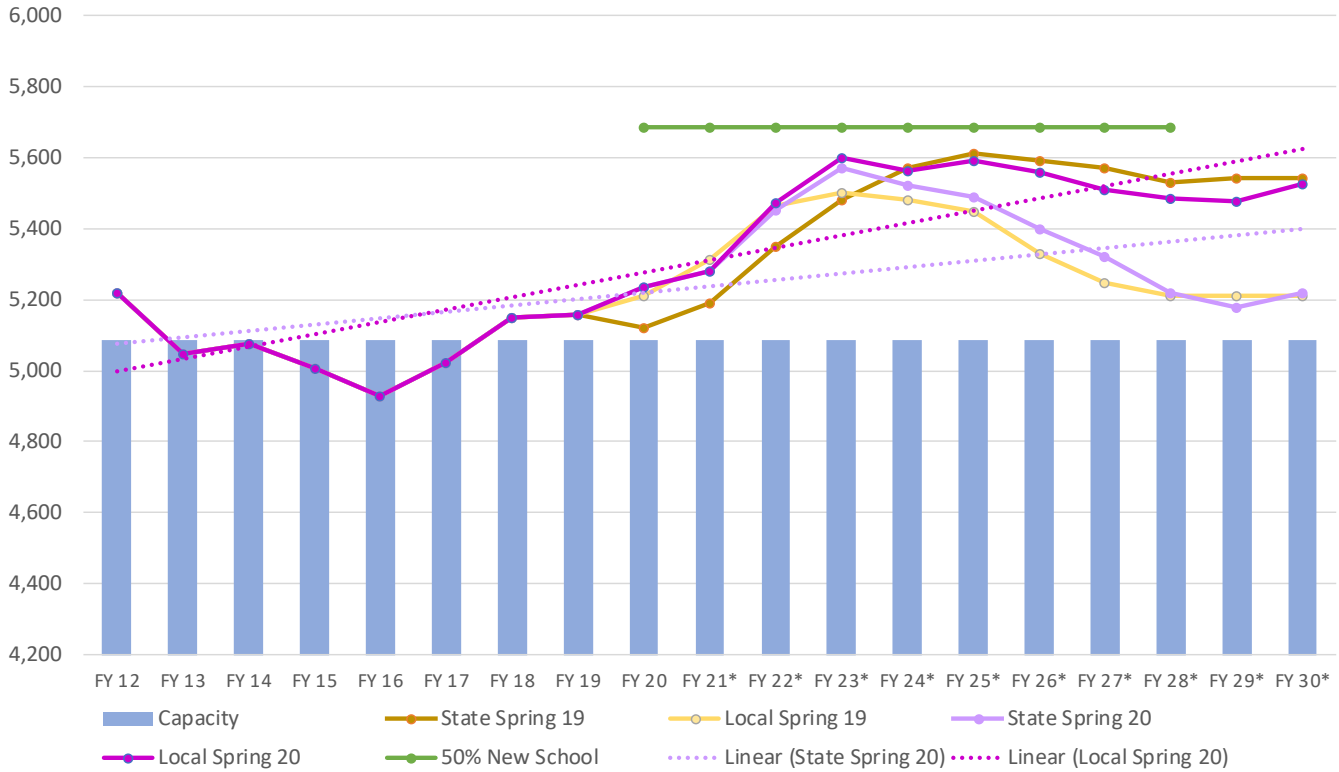




Chart 14

High School - Projections vs. Rated Capacity



Existing and Proposed High Schools	State Rated Capacity	FY 2020	FY 2021	FY 2022	FY 2023	FY 2024	FY 2025	FY 2026	FY 2027	FY 2028	FY 2029	FY 2029	5th +/-	Diff. +/-	10th +/-
		Actual 2019-2000	1st 2020-2021	2nd 2021-2022	3rd 2022-2023	4th 2023-2024	5th 2024-2025	6th 2025-2026	7th 2026-2027	8th 2027-2028	9th 2028-2029	10th 2029-2030			
Chopticon	1,695	1,669	1,703	1,754	1,791	1,798	1,810	1,800	1,784	1,776	1,774	1,790	(115)	(95)	
Great Mills	1,695	1,678	1,704	1,774	1,806	1,793	1,804	1,793	1,776	1,766	1,766	1,785	(109)	(90)	
Leonardtown	1,695	1,889	1,875	1,943	2,003	1,972	1,977	1,964	1,949	1,941	1,938	1,952	(282)	(257)	
County Totals	5,085	5,236	5,282	5,471	5,600	5,563	5,591	5,557	5,509	5,483	5,478	5,527	(506)	(442)	
Difference +/-		(151)	(197)	(386)	(515)	(478)	(506)	(472)	(424)	(398)	(393)	(442)			

Notes: (xxx) = students exceeding capacity